

# eProcurement

**Digitalization and optimization in purchasing**

From ordering to invoicing

# Increased efficiency in procurement

## Relieve your purchase department



Generate savings through efficient processes



Get an overview of your cost drivers



Reduce operational activities



Create time for the essentials

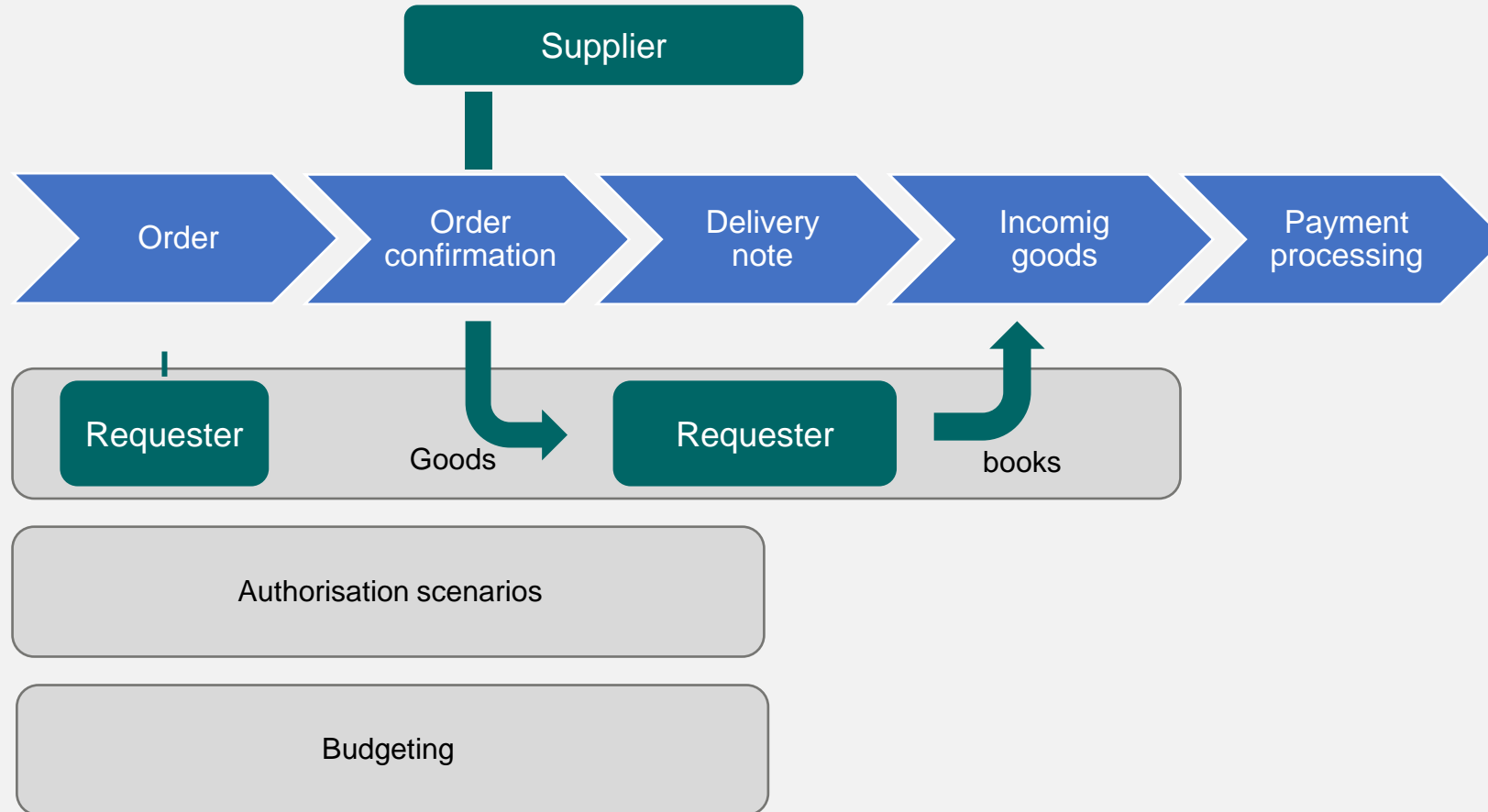


IMMEDIATELY USABLE!



# Simply optimise procurement

## Minimise operational activities, time for the essentials



# C/MRO full supply concept with system

## Effective, efficient

Demand-orientated C/MRO full supply concept consisting of PVH and complementary product ranges



# Systematic digital infrastructure across the entire value creation process

Interface management customer ERP system



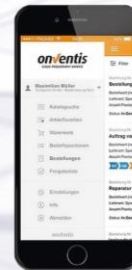
Full product range

Centralised cloud infrastructure

Procurement solution



MobileApp



eLogistics interface



# Your contact partners

## Management

---

### Frank Düringer

tel.: +49 202 6096-1341  
mobile: +49 151 12115970  
mail: frank.dueringer@ede.de

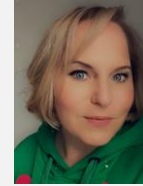


## Assistance & Organisation

---

### Christina Skock

tel.: +49 202 6096-1272  
mobile: +49 151 46463340  
mail: christina.skock@ede.de



## Key Account

---

### Mike Düringer

tel.: +49 202 6096-1390  
mobile: +49 151 0622119  
mail: mike.dueringer@ede.de



### Marius Fränz

tel.: +49 202 6096-4623  
mobile: +49 151 26632886  
mail: marius.fraenz@ede.de



## Consulting & Sustainability

---

### Viola Mensendiek

tel.: +49 202 6096-3926  
mail: viola.mensendiek@ede.de



## Supplier management

---

### Arian Dibrani

tel.: +49 202 6096-1355  
mail: arian.dibrani@ede.de



### Christian Wiese

tel.: +49 202 6096-6247  
mobile: +49 151 58219470  
mail: christian.wiese@ede.de



### Bianca Baratto

tel.: +49 202 6096-4787  
mobile: +49 159 04357405  
mail: bianca.baratto@ede.de



### Lukas Mainka

tel.: +49 202 6096-6258  
mail: lukas.mainka@ede.de



### Metin Sayin

tel.: +49 202 6096-4683  
mobile: +49 159 04357206  
mail: metin.sayin@ede.de



# Many thanks for your attention!

E/D/E Supply Networks Industrial Services initiates strategic concepts to sustainably secure the business relationship between trade and industry and the craft sector.



Einkaufsbüro  
Deutscher  
Eisenhändler GmbH

House address:  
EDE Platz 1  
42389 Wuppertal

Postal address:  
42387 Wuppertal

[www.ede.de](http://www.ede.de)

